



# VIPER QUICK REFERENCE GUIDE FOR MAINTENANCE AND FLAVOR CHANGE

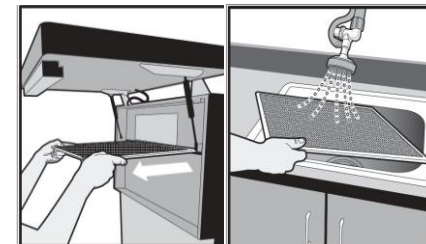
## MAINTENANCE SCHEDULE:

### DAILY MAINTENANCE:

- WASH ALL EXTERIOR SURFACES OF UNIT WITH A MILD SOAP SOLUTION. RINSE WITH CLEAN WATER. WIPE DRY WITH A CLEAN, SOFT CLOTH.
- REMOVE (IF NOT CONNECTED TO DRAIN PLUMBING) AND WASH DRIP TRAY IN MILD SOAP SOLUTION. RINSE WITH CLEAN WATER. REINSTALL DRIP TRAY ON UNIT. IF DRIP TRAY IS CONNECTED TO DRAIN PLUMBING, POUR WARM TAP WATER DOWN THE DRAIN LINE. (DO NOT USE WATER THAT IS HOTTER THAN TYPICAL HOT TAP WATER, SUCH AS HOT WATER FROM A COFFEE BREWER.)

### MONTHLY MAINTENANCE:

REMOVE, WASH, AND DRY AIR FILTER. REINSTALL WHEN COMPLETED



## WARNING LIGHT DEFINITIONS AND CORRECTIVE SOLUTIONS:

- = CALL FOR SERVICE
- = DO NOT SERVE
- = OUT OF WATER / CO<sub>2</sub> / SYRUP

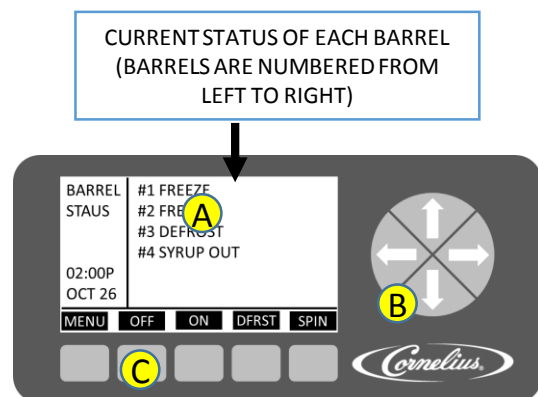
WARNING LIGHT STATUS	CAUSE	LCD MESSAGE	SOLUTION
   ALL BARRELS	OUT OF CO2	"CO2 OUT"	REPLACE EMPTY CO2 TANK
   AFFECTED BARREL ONLY	OUT OF WATER	"H2O OUT"	CHECK WATER (H2O) SUPPLY
   AFFECTED BARREL ONLY	OUT OF SYRUP	"SYRUP OUT" (FOR AFFECTED FLAVOR ONLY)	REPLACE EMPTY SYRUP (BIB) CONTAINER
  	UNIT IS DEFROSTING	"DEFROST"	WAIT UNTIL UNIT COMPLETES DEFROST AND FREEZES PRODUCT. "DO NOT SERVE" LIGHT WILL TURN OFF
  	UNIT IN 1 <sup>ST</sup> FREEZE AFTER DEFROST	"FREEZE" NOTE: THIS MESSAGE WILL REMAIN EVEN AFTER THE PRODUCT IS READY TO SERVE.	WAIT UNTIL PRODUCT IS READY TO SERVE. "DO NOT SERVE" LIGHT WILL TURN OFF.
NO LIGHTS, UNIT IS NOT RUNNING	UNIT IS NOT PLUGGED IN OR BREAKER HAS BEEN TRIPPED	NO MESSAGE ON DISPLAY	PLUG IN UNIT OR RESET CIRCUIT BREAKER

## ELECTRONIC DISPLAY:

## START UP:

- You can set up the machine to SLEEP at the end of the business day and WAKE at the start of the next business day.
- Defrost lockouts should be set for high sales times. Defrost should not be locked out for more than 4 consecutive hours.
- If your machine is not set for this, please request service.

To initiate the freezing process, select the barrel in the status window (A) using the arrow keys (B) and press the ON Button (C)



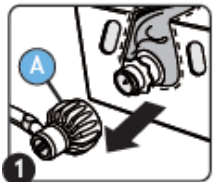
Call for Service if any of the following error messages appear:

- HOT GAS
- HOT BARREL
- TCO OPEN
- BARREL REFRG
- MOTOR STALL

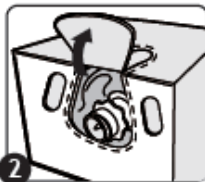
# Reference Guide to Bag In Box (BIB) Procedures



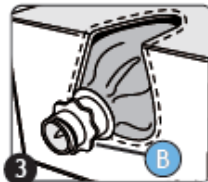
## How to Change An Empty BIB With A Screw Connector:



1 When box is empty unscrew connector "A" and remove box from rack



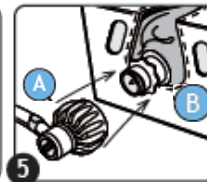
2 Open flap on new BIB box and place on rack  
**Warning:** Do NOT open flap with anything sharp



3 Pull empty bag connector "B" from box and remove dust cap.



4 Wash connector "A" in clean warm water



5 Screw connector "A" to bag connector "B"



6 Make sure product in barrel is at proper fill line, if not pull relief valve to fill \*see right for reference\*



7 After product freezes you are ready to pour

### Frozen **Carbonated** Beverage (FCB)



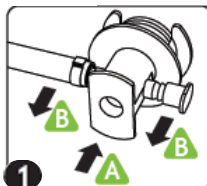
Relief Valve

### Frozen **Un-carbonated** Beverage (FUB)

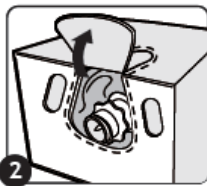


Relief Valve

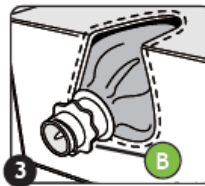
## How to Change An Empty BIB With A QCD Connector:



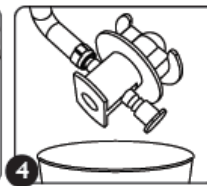
1 When box is empty take off QCD connector by pushing on "A" & pulling on "B" to remove from empty BIB



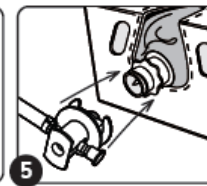
2 Open flap on new BIB box and place on rack  
**Warning:** Do NOT open flap with anything sharp



3 Pull empty bag connector "B" from box and remove dust cap.



4 Wash QCD connector in clean warm water



5 Attach QCD connector on new box by opposite steps from step 1



6 Make sure product in barrel is at proper fill line, if not pull relief valve to fill \*see right for reference\*



7 After product freezes you are ready to pour

## How to Change Flavors:

For best flavor and drink quality, barrel and lines should be cleaned and sanitized per the service manual after a flavor change. New syrups should be set up per syrup manufacturer's recommendation. If a syrup must be changed more quickly than this process allows, use the following steps:

1 When changing syrups, we recommend swapping flavors with same/similar brix settings to prevent issues. For example, light-sugar syrups should be swapped with light-sugar syrups and Cola syrups with Cola syrups

2 Dispense product until the barrel that you want to change displays "OUT OF SYRUP" message

3 Replace the BIB  
Remove syrup connector from empty BIB.  
Rinse the connector in clean warm water.  
Connect clean connector to new BIB.



4 Place a large bucket under the valve and dispense product until the flavor and color of the product has changed.

5 If there is too much air at the top of the barrel, pull the relief valve to allow more product to fill the barrel. \*see example to right



6 Allow a few minutes for the product in the barrel to freeze properly and test for flavor and color. The new flavor is now ready to serve.