



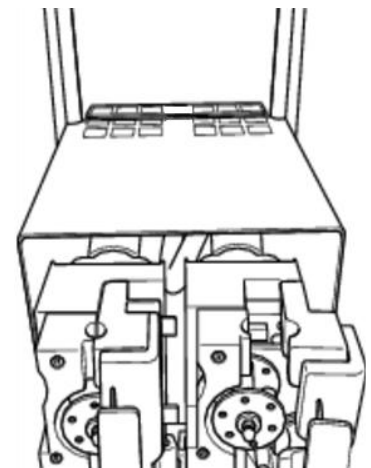
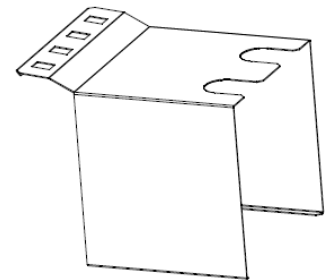
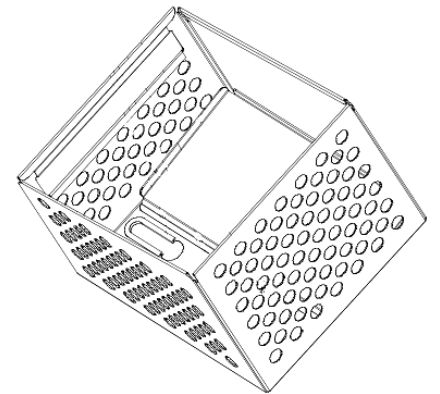
Quest Elite 6.5 L Pouch Holder & Shelf Conversion

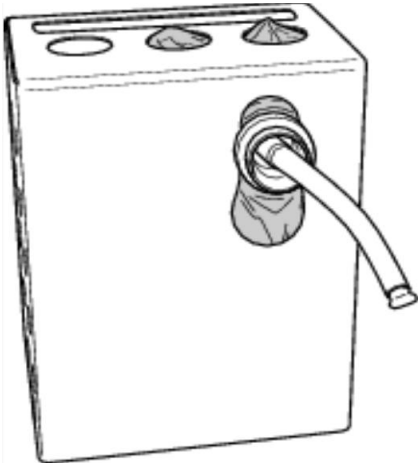
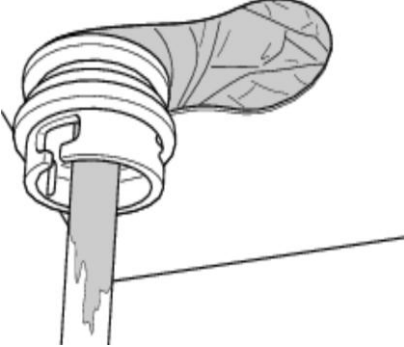
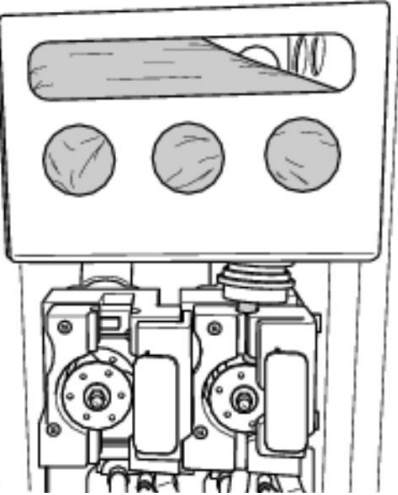
Upon receipt of the retrofit kit containing 1 x new shelf and 1 x new 6.5 liter pouch holder, proceed on replacing the parts **ONLY after your current stock of old style juice concentrate pouches has depleted** and **preferably in combination with** the weekly cleaning. Time required to perform the conversion: 10 minutes (excl. cabinet cleaning) Tools required : None (except for calibrating the Ratios.) Scan the QR-Code for viewing these instructions in other languages



KIT MC1

Step	Procedure
1	<p>Remove the pouch holder & discard the empty old style juice pouch.</p> <p>Note that the new type of pouch holder has a much larger slot & does not allow installation of the old style pouches.</p> <p>! It is therefore recommended to keep the old style pouch holder aside for future use as a contingency back-up.</p>
2	<p>Remove the stainless steel shelf.</p> <p>Put all of the above components aside.</p> <p>Perform the weekly cabinet cleaning. Refer to the Weekly PM cards which reference how to remove the pump platform and check the cabinet drains.</p>
3	<p>Install the new style shelf with the grill facing to the rear of the cabinet.</p>



<p>4</p>	<p>Load the new pouch holder with the new juice pouch with its larger connector. The procedure for loading the pouch is identical as before, just a larger slot in the pouch holder.</p>	
<p>5</p>	<p>Make sure to install the pouch connector as shown.</p> <p>Failure to install the connector in the right way will cause issues connecting the silicone tube to the mixing chamber, concentrate leaks or overall poor quality of the dispensed drinks.</p>	
<p>6</p>	<p>Install the pouch holder onto the shelf and connect the silicone tube to the pump, close the pump door. Next, remove the red stopper and put it aside in a dry and clean place.</p> <p>Install the mixing chamber and nozzle.</p>	
<p>7</p>	<p>For details, please refer to the Quest Elite Operators Manual and PM cards, instruction videos or other.</p>	
<p>8</p>	<p>Check the Ratio. If out of specification, please follow your standard protocol for adjusting the ratio.</p>	